



Sponsored by



Sunday 15th September 2024

Show Instructions

Please find enclosed:

- Vehicle Pass / Trade Pass (Please print and display on arrival)
- Site Plan
- Exhibitor Card (Please complete before arrival and display in vehicle at show) and collect your "Car of the Show" number at the Show Control on arrival

Please read the following instructions carefully:

Site Location

The site is located in the Hotel Car Park of The Concorde, Stoneham Lane, Eastleigh, Hampshire, SO509HQ. For all enquiries concerning the show please contact Rob Heard on 07960 974540.

Arrival

Arrival is from 08:00am to 09:30pm on Sunday 15th September 2024. All display vehicles must be in place by 09:30am, as the show opens at 10:00am. The display ground for vehicles is an enclosed car park, which will be shut between 10:00am and 4:00pm

Departure

No display vehicles will be able to leave the site before 4:00pm, unless with the strict permission of the organisers. When leaving please drive carefully and slowly and follow directions from the marshals when required

Passes

Please print off pass and ensure your vehicle pass is clearly displayed at the front of the vehicle, to speed access on to the site. Please only park in the area you have been designated.

Assembly

Please enter the site by the main vehicle gate where you will see directly ahead of you a bridge over the Monksbrook River. Marshals will be waiting at the bridge entrance to check your passes and direct you on to the show site and your allocated parking area. Trailers, transporters and vehicles not on display need to be parked in the front car parking area during the show open times, and not on the show site, unless prior arrangements made with Rob Heard.

This is a family show catering for the young and old. Public admission is £5 per adult and £1 per child under 12.

Public tickets can be purchased online via our website <https://www.concordeclassics.co.uk/event-list> .

Whilst the show is open to the public, no engines are allowed to be run, unless with the express permission of the organisers.

Food

Food is available during the show from a Barbeque served from 10:00am to 3:00pm.

Alternatively, Sunday lunch is available in the Mouldy Fig Wine Bar in the Concorde Club until 4pm. Booking is essential.

A refreshment van is open throughout the show which will cater for hot and cold drinks and a wonderful selection of cakes and ice creams, which can be found in the trader's areas.

Display vehicle information

You have registered to display your vehicle at the show. Please only park in the area designated to you.

Your entry entitles you to the following:

1. Display of 1 vehicle at Concorde Classics Car Show on Sunday 15th September 2024
2. Allow entry of two persons (including driver). Should you require additional persons, then cost is £5 an adult and £1 a child and can be purchased through our website at <https://www.concordeclassics.co.uk/event-list> . On arrival you will be given wrist bands, please wear these.
3. Entry to the '**Car of the Show**' competition (Competition number collected on the day from Show Control. Please write this number on the Exhibitor Card at top in space provided)
4. We will also be awarding two other trophies this year for '**Best Modern Car**' and '**Best Classic Car**'. These will be judged by our sponsors Silverlake. We will also have rosettes for runner ups.

Please make sure you collect your 'Car of the Show' number from Show control on arrival.

Competitions

This year we are running three competitions:

- '**Car of the show**' – this will be voted for by the public attending the show. Please collect your number from 'Show Control' on arrival and write on 'Exhibitor Card' in space provided.
- '**Best Classic Car**' – selected by our judges.
- '**Best Modern Classic**' – selected by our judges.

Winners will be awarded trophies and rosettes; we will also have runner up rosettes for each class. The winners will be announced at 3.45pm.

Accommodation

The show site is situated in the car park of the Ellington Lodge Hotel within the Concorde Club grounds. No camping is available at the site, however you can stay in the hotel and utilise the restaurant services of the Mouldy Fig Wine bar in the main club. For more information visit the The Concorde web site at: www.theconcordeclub.com or telephone 02380 651478.

Electricity

There is electrical power on the site, however this can only be used with permission arranged prior to the day with organisers. Exhibitors are welcome to bring quiet running generators if power is required.

Cancellation policy

The organiser reserves the right to cancel or amend the event if, in the reasonable opinion of the organiser, it is deemed necessary due to adverse weather conditions, or other reasons beyond the organisers control. If the event is cancelled any application fee paid will be refunded.

Evacuation procedure

Should it be necessary to evacuate the site in an emergency, this will be announced by Public address system and all persons will be directed to a suitable evacuation muster point shown on the attached map.

Security

We will have Security on site, please be vigilant to any suspicious activity or suspicious package and bring it to the attention of a marshal, security officer or Show control immediately. Please ensure you display your passes on arrival, which will be checked.

Charity Donation

The Concorde Classics car show is a charity event. All profits from the show will go to Naomi House Children's Hospice, Charity number 1002832. Should you wish to make a donation on the day please pass money to the Naomi House stand or bucket collectors on site. Alternatively, you can make a donation via our web site.

Covid 19

There are currently no government restrictions, however, to help keep you safe:

- The event is being held outside
- If you are not feeling well or have any COVID 19 symptoms, **please do not attend**. We will be happy to refund you your entrance fee.
 - The main symptoms of coronavirus (COVID-19) are:
 - a high temperature – this means you feel hot to touch on your chest or back (you do not need to measure your temperature)
 - a new, continuous cough – this means coughing a lot for more than an hour, or 3 or more coughing episodes in 24 hours (if you usually have a cough, it may be worse than usual)
 - a loss or change to your sense of smell or taste – this means you've noticed you cannot smell or taste anything, or things smell or taste different to normal
 - a headache, sore throat and runny nose

Web Site

For up-to-date information and attractions at the show visit www.concordeclassics.co.uk

Additional information to Traders

Setting up and breaking down

The stand set up commences on Sunday 15th September 2024 between 08:00 and 09:30am.

Please note: **All Traders vehicles not used in their display **MUST** be removed from the site before **9.00am, at the latest**.** Any vehicles not used as part of your stand must be parked after unloading in the front Car Park at the far end.

All stands / stalls must be **fully set up by 09:30am** as the show opens to the public at 10:00am. If you have a stand in the marquee, then electrics are freely available

Any vehicles not used as part of your stand must be parked after unloading in the front Car Park

Breakdown of stands / stalls may only commence at 4:00pm following closure of the show.

Raffle Prize

If possible, it would be great if you could supply a raffle prize on the day to be used on the Naomi House Stand to help us raise as much money as possible for the charity. The Naomi House staff will visit you shortly after arrival at the show to collect any raffle prizes you would like to donate.

Insurance and Health & Safety

The organiser (The Concorde Club) has public liability insurance to the sum of £5 million. Exhibitors should ensure they have adequate public liability insurance cover to safeguard themselves in the event of an accident and any subsequent insurance claim. Traders are reminded that they are responsible for their own equipment / stand and have appropriate H & S measures to control this.

Organisation

This event has been organised by the Concorde Classics team, made up of representatives from, The Concorde, Naomi House Children's Hospice and Rotary Club of Eastleigh. For further information contact: Rob Heard, 16 Yelverton Avenue, Hythe, Southampton, SO45 3QU, Tel: 07960 974540. E-mail: concorde.classics@gmail.com

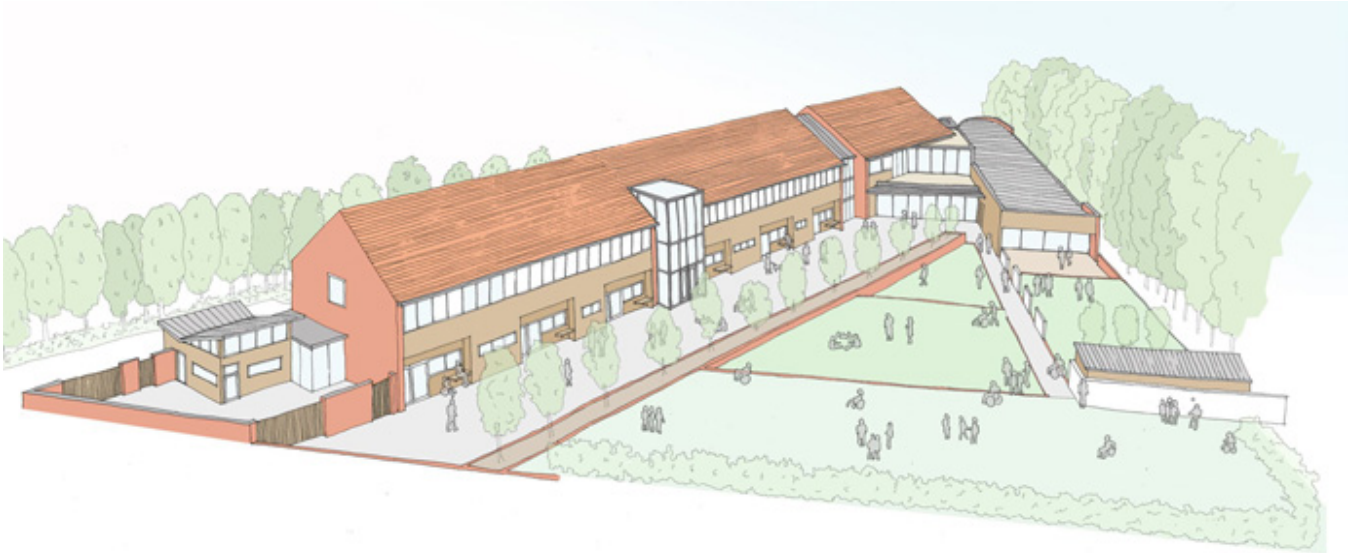
Thank you

Rob Heard (Show Manager)

Naomi House Children's Hospice

Naomi House is a children's hospice providing a professional palliative care service for families whose children and young people have a life limiting illness and their families from central southern England. Naomi House children's hospice is a charity that provides support to children and young people with conditions that mean they are unlikely to live to become adults.

The charity provides care to families living in communities across the seven counties of Berkshire, Dorset, Hampshire, Isle of Wight, Surrey, West Sussex and Wiltshire.



The children's charity has two specialist units, Naomi House for children, and *jacksplace* for young people. Each unit is purpose built and provides an appropriate environment for each age group. It costs around £4.5million a year to run the two units.

Many people get involved in fundraising for the children's charity. Other people volunteer their time to help ensure the hospice is able to continue its work.

The support offered by Naomi House children's hospice is unique in the central south. It delivers a range of services to help to relieve families from the day-to-day pressures of looking after a child or young person with a life limiting condition. Support includes respite care, end of life support, bereavement support and emergency hospice at home care.

Children and young people must satisfy our referral criteria, and be accepted by our review panel before they can visit. The team at Naomi House work in partnership with both families and professionals to include physical, emotional, intellectual and spiritual support throughout the child's care pathway.

Families of children using Naomi House do not have to pay for our services. We are funded by charitable and voluntary donations and receive 7% of our funding from the Department of Health. With the opening of *jacksplace* we aim to arrange care packages for young people over 18, which will involve transitional care for the young person to move from Naomi House to *jacksplace*.

